



# PAPER BED FILTRATION SYSTEM FP MODELS



## Applications

- Grinding
- Metal working
- Sawing
- Honing
- Parts washing
- Metal Finishing
- Water Treating

## VALUE LINE PAPER BED FILTRATION SYSTEM

The Value Line Model FP Paper Bed Filtration System is designed specifically with lighter duty and lower cost in mind. Steel construction allows for years of dependability along with superior filtration capability. The Model FP features a Polymer shuttle style chain connected to woven wire edges, allowing smooth movement and even indexes. A float style level control switch is used for dependable media advance cycles.

Like our standard line of paper bed systems, each unit is configured by filter area and flow rate, the FP models are available in sizes from 7 to 70 gallons per minute. These flow rates are based on water based coolant. Flow rates for oil applications may be reduced by as much as 50% dependant upon viscosity.

Phone: (815) 836-1900 Fax: (815) 836-1901

1000 W. Crossroads Pkwy Unit I Bolingbrook, IL 60490

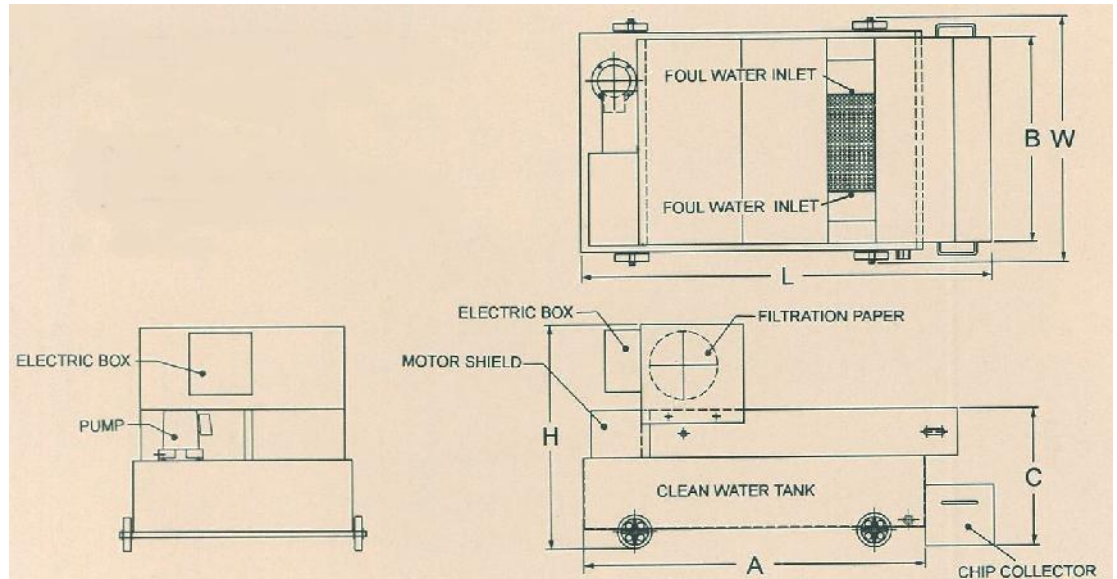
[WWW.FLOWPROINC.COM](http://WWW.FLOWPROINC.COM)

COPYRIGHT© FLOWPRO PRODUCTS, INC. 2014 ALL RIGHTS RESERVED

**FLOW PRO**  
PRODUCTS, INC.



# PAPER BED FILTRATION SYSTEM FP MODELS



Model	Filter Area (sq. ft)	Flow Rate (GPM)	Paper Width	Pump HP	Tank Capacity	A	B	C	H	L	W
FP-3	3	0-7	19.5	1/8	26	33.5	23.5	15.75	26	41	28
FP-5.5	5.5	7-20	19.5	1/4	42	51	23.5	15.75	26	59	28
FP-10	10	20-35	27	1/2	69	71	31.5	15.75	29	71	36
FP-12	12	35-50	39	1	116	53	42	17	29	61	52
FP-18	18	50-70	39	1	169	77	42	17	29	85	52

\* Flow rates are based on water based coolant applications. Flow rates on the oil applications are reduced by 50%.

Dimensions are in inches

### Standard equipment included:

- Immersion type seal-less clean fluid pump
- Casters mounted to coolant tank on Model FP-5.5 through FP-10
- Sealed micro switch type level float switch
- 208/230/3/60 VAC or 460/3/60 VAC supply voltages
- 100 yd. filter paper starter roll included
- Grey industrial paint finish

\*\*Special features available upon request\*\*

Phone: (815) 836-1900 Fax: (815) 836-1901

1000 W. Crossroads Pkwy Unit I Bolingbrook, IL 60490

WWW.FLOWPROINC.COM

**FLOW PRO**  
PRODUCTS, INC.